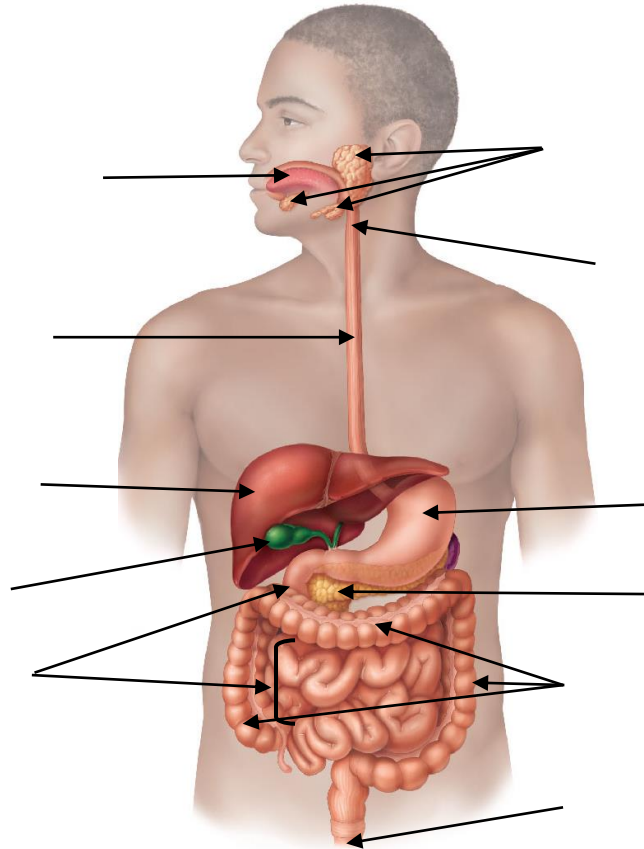


Introduction to Digestive System WS

Structures of the Digestive System

Instructions: Using the word options listed below, label the major structures of the respiratory system. (11 pts)

- A. Small Intestine B. Liver C. Esophagus D. Stomach E. Large Intestine
- F. Mouth (oral cavity) G. Anus H. Pharynx I. Panceas J. Salivary glands
- K. Gallbladder



Digestive System – True or False

Instructions: For each true statement, insert T. If any of the statements are false, correct the underlined word by inserting the correct answer/word into the blank. (11 pts)

- _____ 1. The alimentary canal is also known as the gastrointestinal, or GI, tract.
- _____ 2. The four layers of the alimentary canal can be found from the mouth to the large intestine.
- _____ 3. The muscularis externa layer contains skeletal muscle in a circular and longitudinal layer.

- _____ 4. Secondary digestive organs include teeth, tongue, and several large digestive glands.
- _____ 5. Organs of the alimentary canal include mouth, teeth, esophagus, stomach, small intestine, large intestine, and anus.
- _____ 6. Digestive activity is mostly controlled by reflexes via the sympathetic division.
- _____ 7. The submucosa layer contains blood vessels, nerve endings, and lymphatic vessels.
- . _____ 8. The four layers of the alimentary canal include mucosa, submucosa, muscularis externa, and muscular intima.
- _____ 9. The two intrinsic nerve plexuses of the alimentary canal are the submucosal and myenteric nerve plexus.
- _____ 10. The alimentary canal runs from the esophagus to the anus.
- _____ 11. Food material inside the alimentary canal is technically outside the body.